
User Manual

BaitStar Pro-X

V20180130



!Gouden voerboot regels!

1. Een voerboot is een hyper modern apparaat voorzien van zeer geavanceerde, gevoelige electronica en onderdelen dus behandel hem ten allen tijden met de grootst mogelijke zorg en voorzichtigheid!
2. Vaar nooit achteruit met je boot wanneer er een rig in ligt, hierdoor heb je kans dat de lijn achter de boot in de propeller komt met alle gevolgen van dien.
3. Zet je boot NOOIT onnodig in de volle zon, regen of kou!
4. Lucht je boot regelmatig door de kap iets te openen zodat condens kan ontsnappen (minimaal na elke sessie maar liefst zo vaak mogelijk)!
5. Pas op met het neerzetten van je boot zet deze het liefst op een dun (onthaak) matje
6. Zet je boot altijd droog en schoon weg!
7. Bevestig een nekkoord aan je handzender en hang deze om je nek tijdens gebruik
8. Zorg altijd voor (nagenoeg) volle accu's voordat je gaat vissen
9. Zet je boot nooit weg voor langere tijd met lege accu's!
10. Vang een paar mooie bakken!

Houdt je bovenstaande regels in acht dan zul je Jarenlang plezier van je boot hebben en zal deze je heel veel mooie vissen gaan opleveren!

User Manual of the BaitStar Pro-X Baitboat

Please read this manual thoroughly and follow the instructions of the manual. It's hoped that this product will bring you extraordinary harvest and fun.

Some functions will be modified with the upgrading of the versions, but the user manual will still work. Please accept our apologies for any possible inconvenience.

1. Summary:

A) Baitboat's Main Functions

- 1) 2.4GHZ Full digital duplex two-way wireless remote control
- 2) The remote control handset with LCD can display status of boat and boat systems
- 3) The boat can drive automatically using the integrated digital compass on the boat and the remote control
- 4) Equipped with GPS system, and you can set and store 9 different GPS locations, and automatically drive to these locations via the integrated GPS navigation system
- 5) The information of the river bed contours, water temperature, water depth and fish information will be displayed through the integrated fish finder system
- 6) The barometer can help monitor the barometric pressure on a real-time basis
- 7) The boat can automatically return to the departure point in case of outage of the remote control handset battery or communication outage
- 8) The boat will do self-check. When it detects some problems, the remote control will show the icon of the problem item (the compasses of the boat and the remote control, GPS, fish finder), and the icon will disappear when the problem is solved

B) Baitboat's Types and Configurations:

There are four configurations of boat: A, B, C and D, all of which are equipped with interfaces for product upgrading:

Type	E-compass	GPS Navigation	Fish Finder
A	*		
B	*	*	
C	*		*
D	*	*	*

C) Operating Models:

MANU (manual sailing)	Control the boat by the joystick (forward, backward, turn left, turn right, stop)
AUTO (automatic sailing)	The electronic compass will lock the direction and let the boat sail automatically
GPS (GPS navigated sailing)	The boat will sail automatically between the preset locations under the GPS navigation

2. GPS Satellite Navigation

A). GPS Functions:

- * You can set and store 9 different GPS locations (including 1 departure point and 8 destinations).
- * The boat can sail automatically using the GPS system between the preset locations.
- * Return automatically in cases of outage of the remote control handset battery or communication outage.
- * Calculate and indicate the straight-line distance between the departure point and the destination of the boat.
- * The front and back lamp of the boat will flash and the remote control handset will make audible tones when the boat reaches the destination.



3. Fish Finder

A. Major Functions:

- * Detect the current water temperature
- * Detect the current water depth with a maximum of 30 meters
- * the detection of water depth is of 4 levels: 3-5 meters, 5-15 meters, 15-20 meters, and 20-30 meters
- * There icons of fish size can be displayed: big, medium, and small
- * The sensitivity of fish detection is of three level: C1/C2/C3 from low to high
- * Indicate the actual contour of the riverbed

B. Check the Working Status of the Fish Finder:

- * The fish finder is working well if the water temperature indicates the current temperature of the environment
- * Put the prober (at the bottom of the boat) 60 centimeters away from the ground, if the remote control indicates the distance of 3 meters and there is a bold line, it means that the fish finder is working well.

Notes:

- * The fish finder can only work in the water, and it will make mistakes if it's used on the land. It will recover if it's put back into the water.
- * The fish finder only works in the water deeper than 3 meters.

4. Barometer

Major functions:

- * Detect the current barometric pressure
- * Detect the trend of the barometric pressure
- * The icon will indicate the range of the barometric pressure in the past and future 6 hours
- * The icon will indicate the barometric pressure suitable for fishing

5. Charger

The charger has LED charging indicators. A red light indicates battery is being charged, and after the charging is completed, the red light will turn green to indicate battery is fully charged.

A) The charger of boat :

Use the external charging point on the outside of the cover and use the adapter plug with the charger.

Or take the batteries out of the boat or remove the battery cover on the boat, connect the "Y" shape conversion plug with the batteries and the charger, and connect the charger to the power supply.

B) The charger of the remote control handset:

Insert the charging plug of the charger into the charging USB socket of the remote control handset, and connect the other end with the power supply.

6. Safety Precautions and Notices

- * The antenna is a conductor for electromagnetic waves and lightning, and it will very easily attract the fresh flashing and thunder, so please do not use the bait boat during stormy conditions.
- * As the electronic compass is easily affected by external environment, please avoid using it under high-voltage cables as well as in any areas surround by a strong magnetic field or in areas of mining.
- * The angle between the antenna of the remote control handset and the ground should be greater than 45 degrees. Please ensure the antenna of the remote control handset is kept at a high position, to ensure the maximal signal between the boat and the remote control handset.
- * DO NOT try to dismantle the boat or the remote-control handset by yourself for any reason. For any repairs required, please contact your supplier to arrange for an authorized repair. The Company will not be responsible for the loss caused by unauthorized dismantles.
- * Please ensure the solenoid switch of the bait hopper is clean, and please clear the sands, muds or any other dirt attached to the solenoid

switch and the metal plate so as to keep the switch functional.

Function Specifications of BaitStar Pro-X Baitboat

Boat Type	BaitStar Pro-X
Hull Size	60*35*22cm
Hull Type	Catamaran
Bait Hopper Quantity	1
Hook Quantity	1
Hopper Load Capacity	2KG
RC Range	500M
Turning Radius	0.5M
Frequency	2.4GHZ
Signal Automatic Recovery	≤4seconds
Driving Speed	60m/min
RC Releasing bait / hook	⊙
Manual / Automatic Sailing	⊙
Boat Lighting	⊙
Boat Front and Back Lamps	⊙
Boat Power Switch on	Lights flashing 3 seconds
Hopper Opening/Hook Releasing	Lights flashing 3 seconds
Barometer	
Current Air Pressure Value	⊙
Air Pressure Trend	⊙
Air Pressure High and Low Levels	⊙
Suited Air Pressure for Fishing	1002~1028hpa
GPS	
GPS Positioning Accuracy	< 3M
Time to Capture Satellite	1~5min
Distance Measurement	0~900M
Locations Storage Number	9
Auto Return upon Communication Outage	⊙
GPS Automatic Sailing	⊙
Fish finder	
Current Water Depth/Water Temperature	⊙
Water Depth Range	1~30M
Sensitivity	C1, C2, C3
Boat Battery Working Time	

Lead-acid Battery (12V/10AH)	1.5 Hours
Lithium Battery (11.1V/20AH)	3 Hours

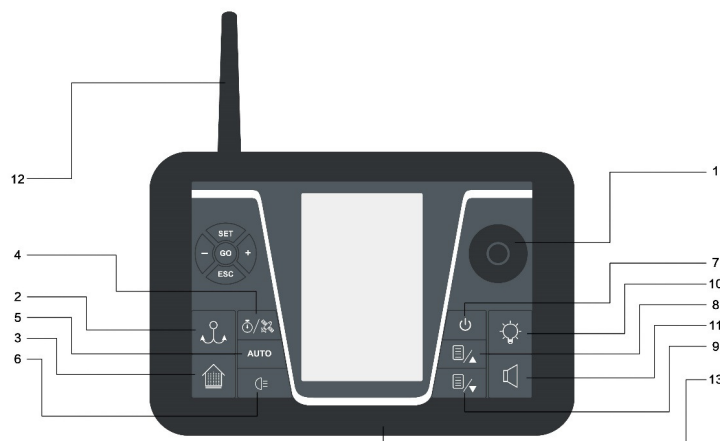
7. Product Standard Configuration and Packing List

NO.	Name	Specification	Quantity
1	Boat	BaitStar Pro-X	1
2	Remote-control Handset		1
3	Charger for Boat Battery	Indoor charging of the boat batteries	1
4	Charger for RC Handset Battery	Indoor charging of the handset battery	1
5	Charger Conversion Plug(“Y” shape)	Length 15CM	1
6	Omni-sealed Battery for Boat (Lead-acid Battery or Lithium Battery)		2

User Manual of Intelligent Remote Control Handset

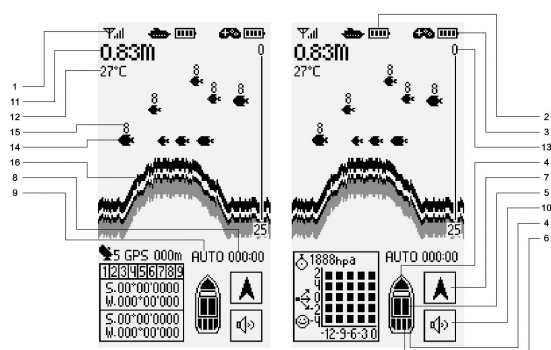
The remote control handset is developed by our company on its own with independent intellectual property rights. It's equipped with LCD, which could display all the sailing and working status of the boat, and can realize automatic sailing and GPS navigation sailing. It's a collection of fun and entertainment, and will bring completely different fun to the anglers.

1. Name and Functions of the Buttons on the Remote Control Handset



No.	Name of Buttons	Functions
1	Rocker (Joystick)	Control the boat to make changes in directions (to turn forward/ backward/ left/ right/ stop)
2	Hook release button	Release the hook on the boat, and its working condition is indicated with an icon
3	Bait hopper open button	Open the bait hopper door, and the working condition is indicated with an icon
4	GPS/Barometer button	Press the button to switch between GPS and barometer menu
5	Automatic sailing button (AUTO)	Press the button to make boat sail automatically in the locked direction as indicated by the electronic compass
6	Boat lamp button	Switch on/off the boat front/back lamp
7	Power switch (on/off) button (menu item confirmation button)	1. Press and hold the button for 3 seconds to switch on the remote control handset, 2.Press the button to confirm menu items
8	Menu button ▲	Enter main menu and choose the menu, move the cursor upwards and select options
9	Menu button ▼	Enter main menu and choose the menu, move the cursor downwards and select options
10	LCD backlight button	Press the button to switch on/off the RC LCD backlight;when backlight is on,you can press and hold the button for a period of time to adjust the brightness of LCD.
11	Alarm button	There will be audible alarms in case of weak signals or low voltage. When the alarm beeps, press the button to eliminate the audible alarm
13	USB charging interface	The interface of charging RC handset

2. Display of the LCD on the Remote Control Handset

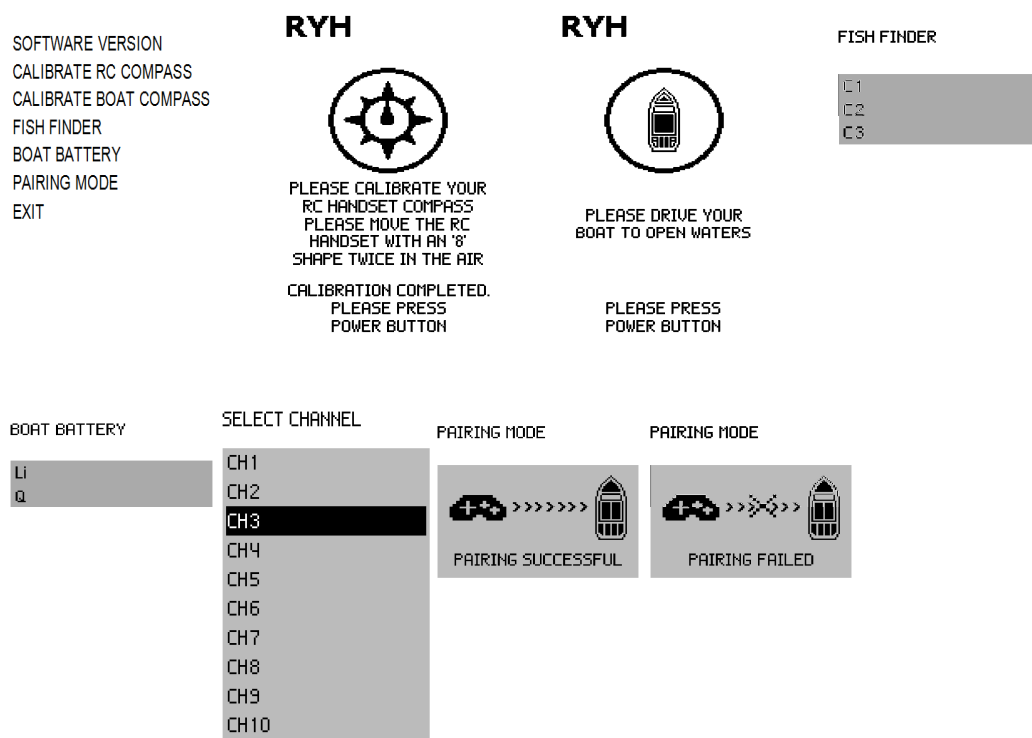


No.	Name of the Icons	Functions
1	Signal	The strength of the signal between the boat and the remote control handset
2	Boat battery status	Indicate the power status of the boat batteries. When the power is running low, there will be an audible alarm.
3	Battery status of remote handset	Indicate the power status of the remote control handset. When the power is running low, there be an audible alarm.
4	Front/back lamps of the boat	Show the front/back lamps through the icons. When the lamps are on, the icon will turn white from black, and when the hopper is opened or the hook is released, the lamps will flash with audible alarms
5	Bait hopper open indication	When the icon of the bait hopper turns white from black, it indicates that the hopper opens
6	Hook release indication	When the icon of hook turns white from black, it indicates that the hook is released
7	Sailing direction indication	Indicates the sailing direction of the boat, and the arrow indicates the bow of the boat
8	Sailing time	Indicate the actual sailing time of the boat
9	Sailing mode	MANU/AUTO/GPS
10	Display of audible alarm	Display the audible alarm of the remote control, and you can switch it off if you don't need it
11	Current water depth	Measure the current water depth when the boat is sailing
12	Temperature	The current water temperature
13	Water depth range	Detect the range of water depth, and can automatically switch between the ranges
14	Fish size identification	Indicate the size of fish (big, medium, small)
15	Depth of fish	Indicate the depth of water where the fish is
16	Riverbed contour	Indicate the contours of riverbed

3. Options on the MENU and Operation Instructions:

A) **Select MENU:** press menu “▲” or “▼” to enter the menu, and you can select the options. When a certain option is selected, press the power button to set the submenu options. After the options are set, press the power button, and the modified options will be automatically saved and return to the main menu. After all the options are set, select the “EXIT” menu to get back to the main interface.

B) Items on the menu:



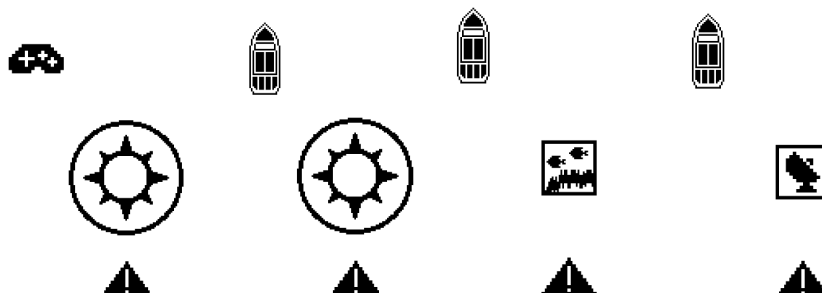
C) Options on the Menu and Settings:

Main Menu Options	Submenu Options
CALIBRATE RC COMPASS	Please follow the screen icon, roll the remote control in a shape of “8” twice in the air, and then press the power button to complete the calibration.
CALIBRATE BOAT COMPASS	<p>1) Drive the boat to an open water following the screen icon , and press the power button to confirm.</p> <p>2) The boat will conduct automatic calibration itself in the water, and it will automatically enter into the operational interface after the calibration is completed.</p> <p>Note: The calibtaion is successful if the arrow on the remote control screen is of the same direction with the bow, otherwise the calibration has to be conducted once again.</p>
FISH FINDER	Adjust the sensitivity from low to high by selecting C1,C2,C3
BOAT BATTERY	Lithium or Lead-acid batteries (Li/Q)
PAIRING MODE	Pairing between the remote control handset and the boat. It has been set before delivery, and the user doesn't need to pair again.

EXIT	Press this button and exit from the main menu
------	---

D.Malfunction Monitoring:

This device could monitor the working status of boat and RC handset at any time.If some parts have malfunction ,the RC handset screen will automatically jump out of the following pictures,which indicate the phenomenon of malfunction.When the malfunction is eliminated,the picture will disappear.The following pictures from left to right successively means: RC compass malfunction,Boat compass malfunction,Fish finder malfunction,GPS malfunction.



4. GPS Buttons and Functions



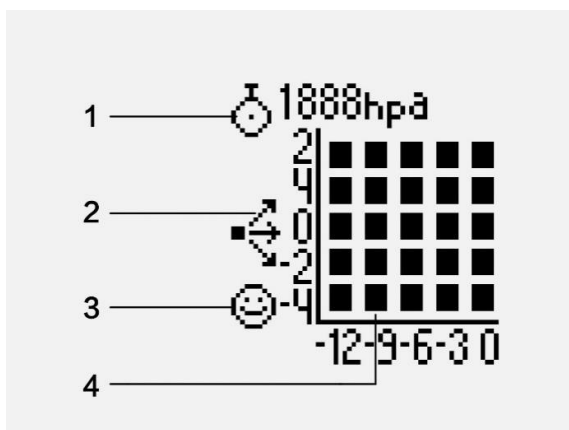
A) GPS Main Interface (the chart on the right)

No.	Display of GPS	Functions
1	Distance between the boat and the remote control handset	Indicate the straight-line distance between the boat and the remote control handset
2	Number of GPS satellites	Indicate the number of receiving satellites, and the GPS navigation will be quite accurate if there are over 6 receiving satellites
3	GPS locations	Enter the GPS menu and choose 9 locations, we usually set departure point at number "1"
4	GPS longitude and latitude of the destination	Indicate the longitude and latitude of the address while saving the target address in the menu
5	Current GPS longitude and latitude	Indicate the real-time longitude and latitude of the boat during the sailing

B) GPS Buttons and Operations (the chart on the left)

No.	Name of the Icon	Functions
1/3	Moving the cursor	There are 9 different locations available. we usually set departure point at number “1” , and number 2-9 can be set as destinations. The flashing number indicates the number that is ready to be set, and press the “+/-” button to skip to the next/last number.
2	SET (set or cancel the location)	1. Set the location: after selecting the number for the locations, press the SET button and the selected cursor block will turn black, which indicates the location has been successfully registered. 2. Cancel the location: if any location number should be removed, move the cursor to the number of location that needs to be removed, and press the SET button for 3 seconds, the number will turn to a flashing number, which indicates the location has been removed.
4	GO (Sailing under navigation)	Move the cursor to the preset number of location that you want the boat to sail to, and press the GO button. The boat will sail automatically to the selected location. Press the GO button again to cancel the sailing under navigation.
5	ESC (exit from the GPS menu)	Press the button to exit from GPS menu (the preset GPS locations will not be removed)

5. The Display and the Functions of the Barometer



No.	Display of the Barometer	Functions
1	Current barometric pressure	Indicate the current barometric pressure
2	Trend of barometric pressure	Chart of barometric pressure in the past 12 hours
3	The barometric pressure suitable to fish	Easy to fish in case of 1002~1028hpa, hard to fish in case of <1002hpa
4	Change of barometric pressure	<p>The horizontal axis: measure the barometric pressure at intervals of one hour and compare it with the previous values and see if there are any changes. The furthest right side suggests the current barometric pressure.</p> <p>The vertical axis: the change of the barometric pressure, and each point refers to the change of 200hpa.</p> <p>The table is often used to predict the weather. If the trend goes upwards, it means the weather will go better, and vice versa.</p>

Functions and Parameters of the BaitStar Pro-X Remote Control Handset

Function	Configuration
Remote Control Handset Working Time	20hours
Real-time Monitoring of Boat Errors	⊙
MANU Sailing/AUTO Sailing	⊙
Indication of Signal	⊙
Battery Status of Boat and RC Handset	⊙
Indication of Boat Sailing Direction	⊙
Indication of the Actual Travel Time of the Boat	⊙
Hopper Open/ Hook Release Indication	⊙
Boat front/back lamps status Indication	⊙
LCD Backlight	⊙
Audible Alarm of Weak Signal	⊙
Audible Alarm of Low Battery	⊙
Audible Indication for Hopper open& Hook Release	⊙
Audible Indication of the Boat Navigated to Destination	⊙
Barometer	
Current Barometric Pressure	⊙
Range of Barometric Pressure	⊙
Trend of Barometric Pressure	⊙
Indication of Fishing Suitability	⊙
GPS Navigation	
Indication of GPS Signal	⊙
Set the Location	⊙
Measure the Distance	⊙
GPS Automatic Sailing	⊙
Show the Longitude and Latitude of the Destination	⊙
Show Real-time Longitude and Latitude During Sailing	⊙
Store GPS Locations	9
Fish Finder Parameters	
River Bed Contour	⊙
Water Temperature/ Water Depth	⊙
Range of Water Depth	1-30M/4 levels
Fish Size Indication	Big/Medium/Small
	Fish Sign
Sensitivity	C1, C2, C3